



POST-TO-POST BALUSTRADE TAKEOFF

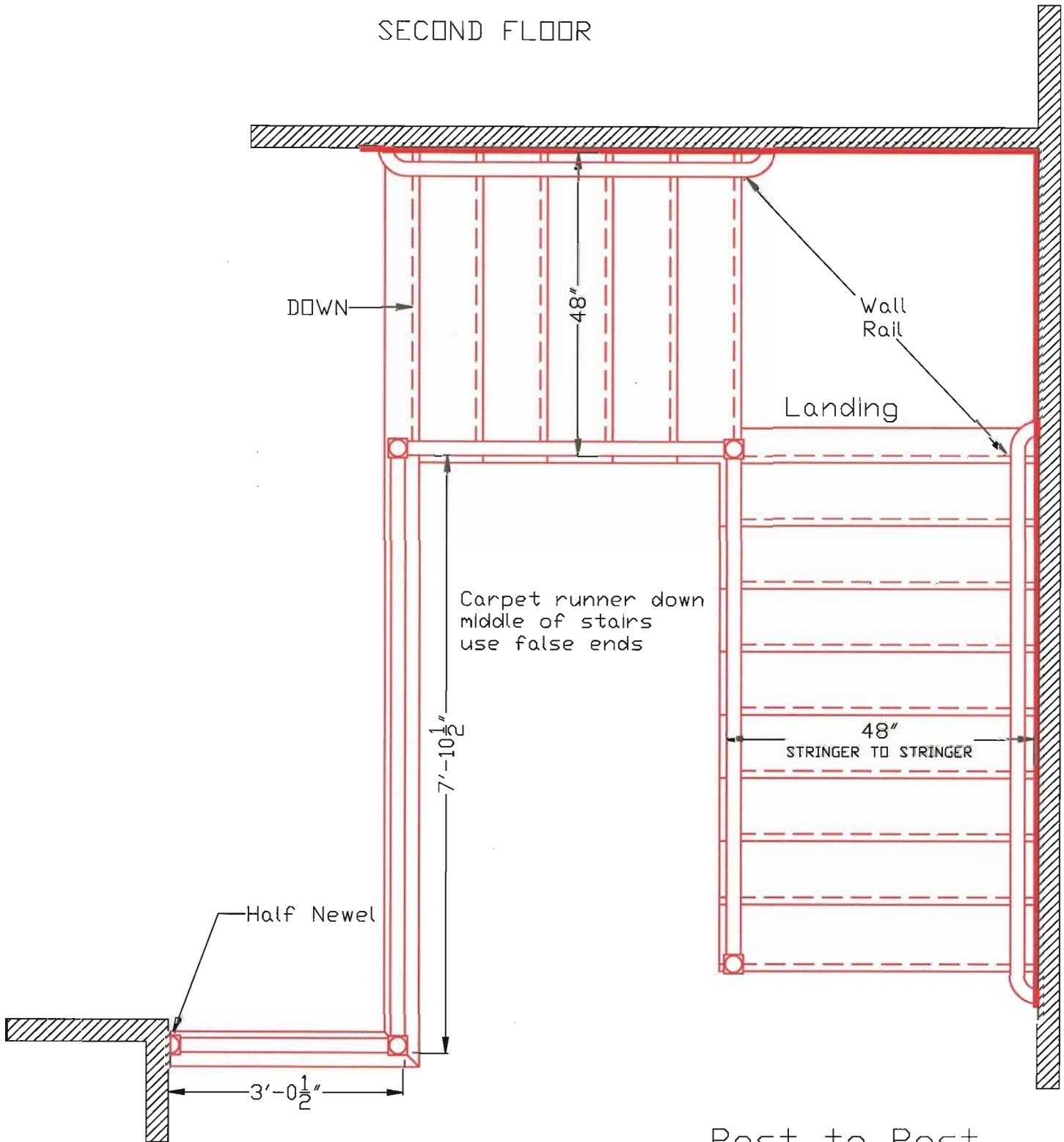
	PAGE #	Species	Part #	Qty.	List each	Net each	Net extended
Assumes 34" rake height- measured from tip of tread nosing to top of handrail							
1 SKIRT BOARDS-- Select at least 13" per tread, and any additional that extends beyond first and last risers.	CH-47						
2 STARTING STEP--Optional # customer wants the first step open.	CH-46						
3 TREADS-- Excluding the starting step, choose one tread for each step. Specify: Nosed one side (front side), or Reversible Mitered Returned, or Broscos Double Returned Tread. Open one-side add 1 1/4" to the skirt board-to-skirt board measure and order the next larger standard tread length. Ex: 47+1 1/4 = 54"	CH-47						
	STR-28						
	STR-29						
4 RISERS-- Number of risers = # of treads + 1. Custom lengths available.	STR-28						
* TREAD KITS-- Use FALSE TREADS & RISERS with center/side carpet runner on rake.	CH-48						
5 LANDING TREAD-- Use 5 1/4" landing tread everywhere except on front edge of landings and winder treads. 3 1/2" also available	STR-28						
* WINDER TREAD STOCK MATERIAL	STR-28						
6 COVE MOULD-- Lineal footage installed under all landing treads, front tread nosing, & all mitered returns on each tread. Add 10% for waste.	M-8						
	M-9						
* SCOTIA & NOSING	STR-28						
7 STARTING NEWEL-- Choose the 54" or 56" length with 5" block.	CH-7-28						
8 STARTING NEWEL FITTINGS: Level Quarter Turn and/or Upstepping for aesthetics.	CH-45						
9 INTERMEDIATE LANDING NEWEL-- Utilize an Intermediate Landing Newel (56") with 14 1/2" top block, when not using a gooseneck fitting; or use a 5" or 5 1/2" top block Intermediate Landing Newel when a gooseneck fitting is added for aesthetics. Fittings-CH-45	CH-7-28						
10 SECOND FLOOR NEWEL-- 1" top block, when not using a gooseneck fitting; or use a 5" or 5 1/2" top block Universal Newel (48"-56"), when a gooseneck fitting is added for aesthetics. Fittings-CH-45 needed in step 18.	CH-7-28						
11 BALCONY NEWEL-- Use shortest universal newel (48") for surface mounting flush to floor; Or use the 56", or longer, if newel will extend below floor surface. Newel will be notched & lag bolted to floor joists, thus extending below the floor surface or ceiling of lower floor.	CH-7-28						
12 HALF NEWEL OR ROSETTE-- Half Newel enhances aesthetics and increases structural integrity. Longer half newel can be utilized with a 7.99 fitting; and is lag bolted to wall (3078). Use a round rosette for level balcony rail ending into a wall. Use oval rosettes for rake rail ending into a wing wall.	CH-7-28						
13 HARDWARE-- Choose the preferred newel mounting hardware for each newel post and for newel-to-rail connections.	CH-49-50						
14 RAKE BALUSTERS (3-Length System) WOOD When installing TWO balusters per tread: 1st baluster is a 34" ; 2nd baluster is a 38" When installing THREE balusters per tread: 1st baluster is a 34" ; 2nd baluster is a 38" , 3rd baluster is a 42" . Trim balusters from the bottom. Use a 42" baluster under all goosenecks.	CH-7-23						



POST-TO-POST BALUSTRADE TAKEOFF

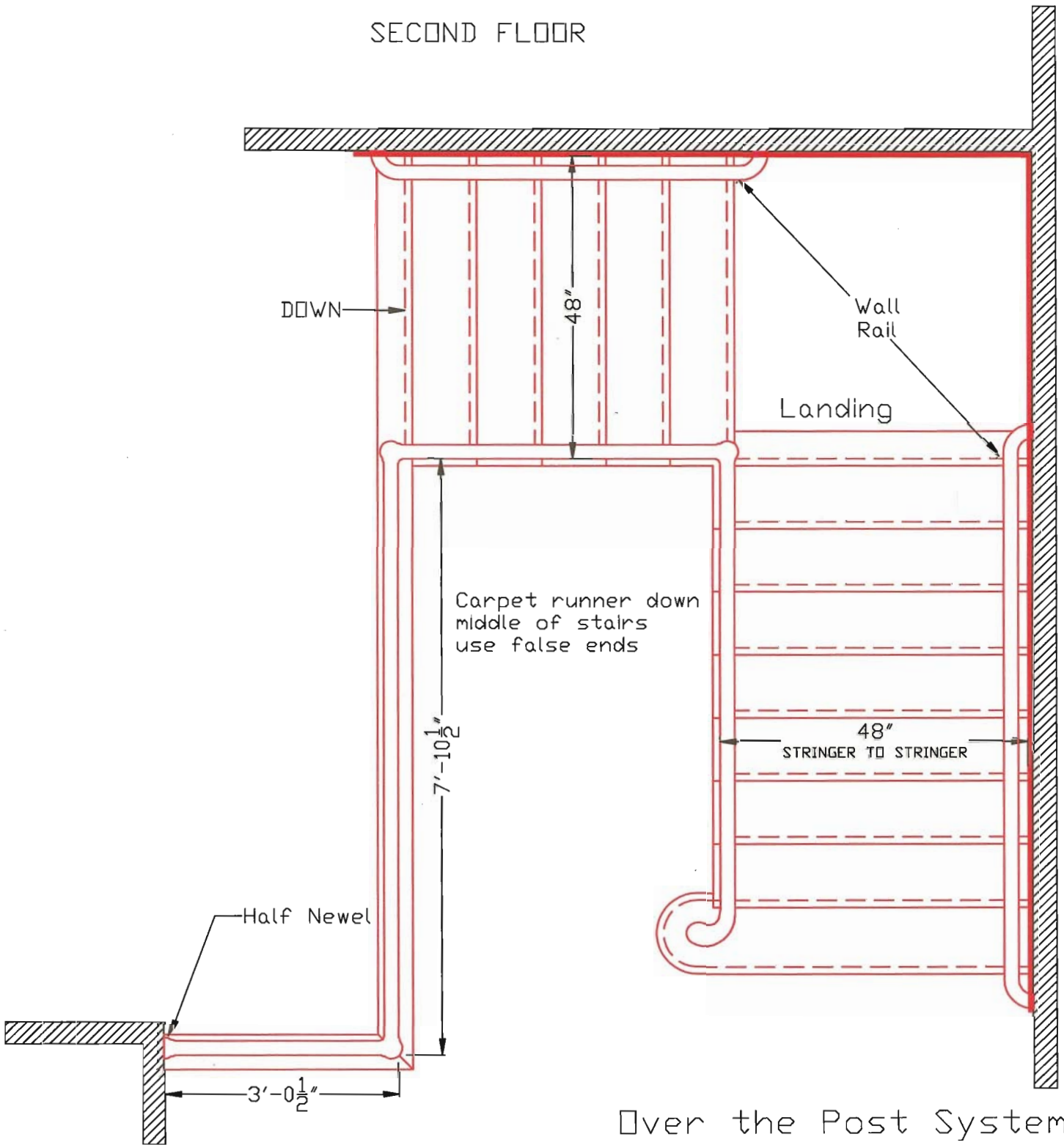
	PAGE #	Species	Part #	Qty.	List each	Net each	Net extended
Assumes 34" rake height- measured from tip of tread nosing to top of handrail							
15 RAKE BALUSTERS (Crown System) WOOD	CH-7-23						
When installing TWO balusters per tread: 1st baluster is a 35", 2nd baluster is a 39" When installing THREE balusters per tread: 1st baluster is 35", 2nd is a 37 1/2", & 3rd baluster is a 44". Trim the balusters from the top.							
16 IRON BALUSTERS-- Use 44" lengths everywhere.	CH-29-43						
17 HANDRAIL-- Handrail lengths available from 6' - 16'. Plowed Rail includes tacked in fillet. To determine length of rake rail: multiply the # of steps x 13", round up to next even length All available handrails are shown on page 44. Sprindle top baluster use flat bottom handrail; square top balusters use plowed handrail-- 1 1/4" square top baluster use 6000P, 6010P, 6100PA. 1 3/4" square top baluster use 6001P, 6005P, 6100PB, 621P, 6310P, 6519P	CH--7-23						
18 WALL RAIL-- Measure to length. Bottom of wall rail options: Round Rosette, level quarterturn, & up easing MIDDLE-- Order Rosette, Wall Rail Bracket every 5- treads, or divide total length of rail proportionately. Top of stairs, optional additions: over easing, & level quarterturn, & rosette. BUTTON PLUGS-- 2 per rosette, 1 for each side to cover holes for wood screws.	CH-7-23 CH-45-49 CH-45-49 CH-49						
19 SHOERAIL--6' to 16' length; Shoe rail is shipped w/ fillet. For 1 1/4" balusters use 6008 or 6045 shoerail. 1 3/4" balusters use 6009, 6050, 6006, or 6245 shoerail. Length of shoerail on rake = # of treads x 13", round up to next even length. Any balcony shoerail? * Fillet is also sold separately, factory order	CH-7-23 CH-44 CH-44 CH-44						
20 FITTINGS (From step 7 thru 12)-- Choose the appropriate fitting(s) required for your application.	CH-45						
21	Accessories						
Dowell screws, Newel Fasteners	CH-49-50						
Rail bolts, Plugs	CH-49						
Wall rail brackets	CH-49						
Wrought iron shoes and accessories	CH-43						
Tools	CH-50						
22 DECORATIVE BRACKET-- If desired use one bracket for the open side of each tread. Specify hand if applicable. (See page 31)	CH-48						
23 RAKE NEWELS- Utilize a rake newel between Starting Newel and 2nd floor landing newel, to add structural stability for long rakes. See page CH-24 for long rake example.	CH-8-22						
24 MISCELLANEOUS-- Tools? Hardware? Accessories? Epoxy?							

SECOND FLOOR



Post to Post

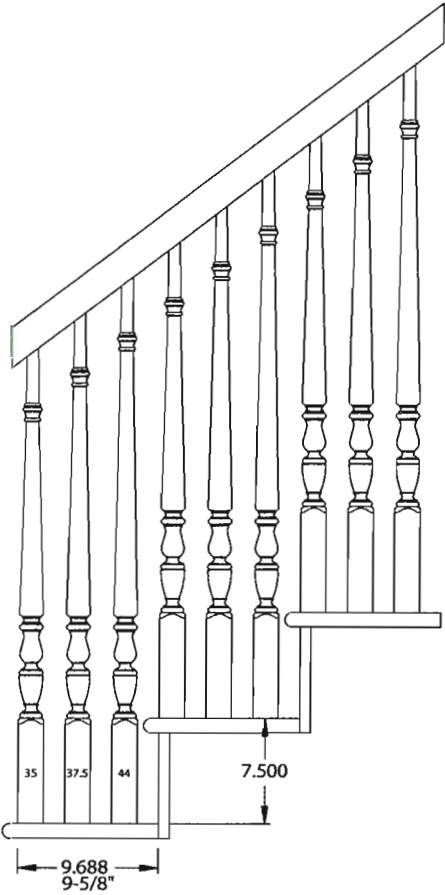
SECOND FLOOR



Over the Post System with Turnout

3 BALUSTERS PER TREAD*

AVAILABLE NEWELS



Please check with your local building codes on how to comply with the 10" tread run and the 4" sphere rule.



4810



4813



4842

OVER-THE-POST NEWELS
with Pin Top

- 3 1/2" 4810 (43") Universal Newel (*shown*)
- 3" 4812 (43") Rake Newel
- 3 1/2" 4813 (48") Volute Newel (*shown*)
- 3 1/2" 4814 (48") Universal Newel
- 3 1/2" 4825 (56") Intermediate Newel

POST-TO-POST NEWELS
3 1/2" with Urn Top

- 4842 (56") Universal Newel (*shown*)
- 4845 (56") Second-Floor Landing Newel
- 4866 (58") Intermediate Newel

*Because of the variations that occur during construction and during installation sanding, our measurements calculate code compliance with the 4" sphere rule to $\pm 1/16$ of an inch.

AVAILABLE HANDRAILS

AVAILABLE SHOERAILS



6310 6519 6210 6100



6006 6009 6245



6310P 6519P 6210P 6005P 6100PB

STAIR TAKEOFF QUESTIONS

Before we start, we need clear, labeled digital pictures, or a set of floor plans, or a detailed drawing of the stair carriage, in order to determine the parts of the balustrade system. This will precisely indicate open or closed treads, adjacent walls, landings, balconies, Etc. The # of treads & risers, and the length of the balcony(s) must also be indicated on plans. **ALL STAIRS ARE VIEWED AS IF YOU ARE STANDING AT THE BOTTOM OF THE STAIRS. When completing a takeoff, start at the bottom of the balustrade system, and work your way up the stairs.**

1. Rake Handrail Height--34" to 38": _____
2. Balcony Handrail Height--36" to 42": _____
3. **OTP** or **PTP** or **Combination of Both**: (circle one)
4. Style of:
 - Handrail: _____
 - Newels: _____
 - Balusters: _____
5. Fittings: If PTP, will fittings be used at the bottom of the stair after the starting newel, at the intermediate landing Newel (s), or 2nd floor landing Newel (s): (CH-p.53)
6. Starting Step: 8_____ (CH-p.54)
(If Double Bullnose, specify finished stringer to stringer measurements): _____
7. If Over-the Post, pick a Starting Fitting: (CH-p.53) In regards to all fittings, the 2nd digit in the fitting, must correspond to the 2nd digit of your handrail. Choose from the following:
 - a. Starting Easing with Cap: 7__10 (no starting step required)
 - b. Small Turnout: 7__41LH 7__46RH
 - c. Large Turnout: 7__40LH 7__45RH
 - d. Volute: 7__30LH 7__35RH
 - e. Volute 90 degree: 7__3090LH 7__3590RH
 - f. Ascending Volute: 7__33LH 7__38RH
8. If OTP, how many balusters under the starting fitting? _____ (CH-p.11, question #13 or #14)
9. Starting Newel: CH-p.18-36). Choose either a Universal Square bottom Newel, with or without 1-1/2" Removable Installation Dowel, or the following Diameter Bottom Newel:
 - B-765- 2 ¼" diameter w/ removable dowel (CH-p.8)
 - B-895U- 2 ¾" diameter w/ removable dowel (CH-p.8)
 - 4050- 2 ¼" diameter (no dowel, CH-p.22)
 - 4060- 2 ¾" diameter (no dowel, CH-p.22)
 - a. Universal/Starting Newel: _____ (pages CH-p.8-28)
 - b. Intermediate Landing Newel: _____
 - c. 2nd Floor Landing Newel: _____
 - d. Balcony Newel: _____
 - e. Rake Newel: _____

STAIR TAKEOFF BASIC QUESTIONS

10. Two 1-3/4", OR Two or Three 1-1/4" Balusters per Tread: **(circle one)** _____

11. Individual Run and Rise measurement **X** Length of Tread

Run= Measured from the front of one riser to the front of the next riser: Run= _____ **X** _____

Rise= Measured from the top of one tread to the top of the next tread: Rise= _____ **X** _____

12. Length of Balcony(s): _____

13. Balcony baluster spacing should be 4 1/2" on center: (Length of balcony"/4.5"= # of balusters:
_____ balcony balusters. Species: _____

14. Any wall rail required: Some Code Officials require that wall rail be returned into the wall at the bottom and top of stairs: If this is the case utilize the following fittings:

A- Bottom of stairs----Level Quarterturn--7__11 and/or Upeasing--7__12. (CW-p. 53)

B- Top of stairs-----Overeasing--7__13 and/or Level Quarterturn--7__11 (CW-p. 53)

C- Round Rosettes (behind wall rail brackets and fittings: 7217 or 7317 (CW-p. 56)

D- Wall Rail Brackets: 3002, 3027, 3028 (specify finish)_____ (CW-p. 57)

15. If Balcony rail ends into wall use either: Round Rosette or Half Newel: **(circle one)**

A. If an OTP half newel is chosen, use a 7__19 fitting by cutting off rounded end;

B. If using a longer newel for a more pronounced aesthetics; utilize 90 degree upeasing 7__14,
& 7__96 or 7__97 (CW-p.53)

16. Does Rake rail end into wing wall with Oval Rosette- 7027, 7037, 7202 (CW-56)

Or utilize a Half Newel: _____

A. If OTP & utilizing a half newel; use a 7__97. (CW-p.53)

17. Method of mounting Newels: notched or surface mounted: **(circle one)**

STAIR TAKEOFF BASIC QUESTIONS

8. If Newels are SURFACE MOUNTED- choose Newel Mounting Hardware:
(see page 57-58 for Newel Mounting Hardware): 3 _____, QTY _____, Species _____

If Newel is NOTCHED & LAGGED TO FACIA, utilize 3078 RAIL/POST FASTENER (1 lag bolt, 1 washer, & a 3/8" tapered wood plug, specify species. Depending upon the amount of newel material extending below the floor, more than one kit may be used. (p.23-CW-SBS-SC— Crown Heritage Step-By-Step Stairway Construction Manual)

9. Does newel extend below floor joists, exposing the bottom portion below the ceiling? No _____ Yes (if yes, utilize newel drop 4099, (CW-p.55) _____ 4099 species _____

10. Are Treads needed: **yes** **no** (BROSCO PRICE BOOK-STR-p.28)
Specify: **Plain, Mitered Returned (MR), or Double Miter Returned Treads**

1. 3/4" x _____ width x _____ length Species: _____ (BROSCO PRICE BOOK, STR-28)

2. 1 1/32" x _____ width x _____ length Species: _____ (BROSCO PRICE BOOK, STR-28)

3. **Brosco Double Miter Returned Treads: Specify Finished Stringer-to-stringer measurements. (see BROSCO PRICE BOOK, STR-29)**

CROWN HERITAGE TREADS & RISERS: (CW-p.55)

8070 HYBRID _____
8070V: Engineered Tread _____
8070: Plain Tread _____
8070MR (reversible) _____
8075 Riser 3/4" x 7 1/2" _____
8078 Riser 3/4" x 8" _____
8070MR RH or LH _____
8070DMR Double MR _____

1. Are Risers needed: 3/4" x 7 1/2" x 42" (YOUNG-BROSCO, p. STR-28) Species: _____
3/4" x 7 1/2" x 48" (YOUNG-BROSCO, p. STR-28) Species: _____
3/4" x 7 1/2" x 60" (YOUNG-BROSCO, p. STR-28) Species: _____

Note: You will need 1 more riser, compared to the # of treads used—ie: 10 treads, 11 risers

